

Media Profile Installation Guide for Mimaki Raster Link Pro II®

Instructional Bulletin #6.71 (Revision 1)

Dated: 12/31/14

1.0 Scope

The procedure for installing Avery Dennison Graphics media profiles once they have been downloaded from the Avery Dennison Graphics Profile Download Wizard. <http://avery-us.color-base.com/>

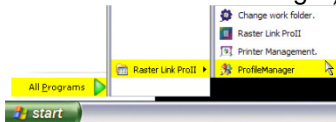
2.0 Downloading

Extract the Avery Dennison Mimaki Raster Link Pro II media profile (ex:profile_name.icc) from the downloaded ZIP file to a convenient temporary location on the computer.

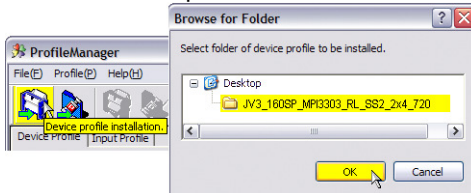
NOTE: After successful installation, the downloaded files can be deleted, or save them for backup.

3.0 Installing

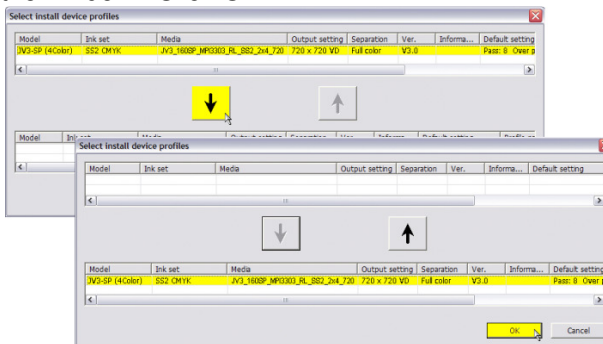
1. Open **Mimaki Profile Manager** (Windows Start Button > All Programs > Mimaki Raster Link Pro II > ProfileManager).



2. Click the **“Device profile installation”** button. Browse to the media profile folder extracted in Step 1, select it and click **OK**.

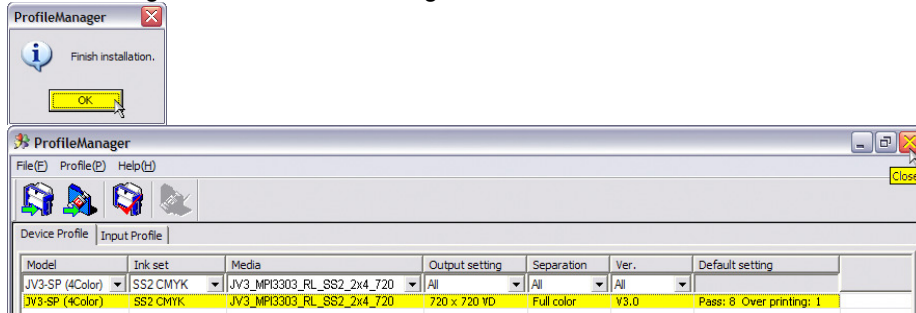


3. The profile will appear at the top of the **“Select install device profiles”** window. Select the profile and click the **DOWN** arrow. This will move the profile listing to the bottom half of the window. Click **OK**.



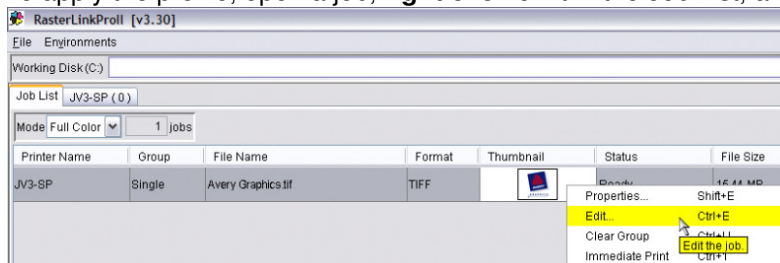
Section 6 – Special Product Information Instructional Bulletin

- Click **OK** to finish installation. The profile will now appear in the list of installed profiles in ProfileManager. Close ProfileManager and launch Mimaki Raster Link Pro II.



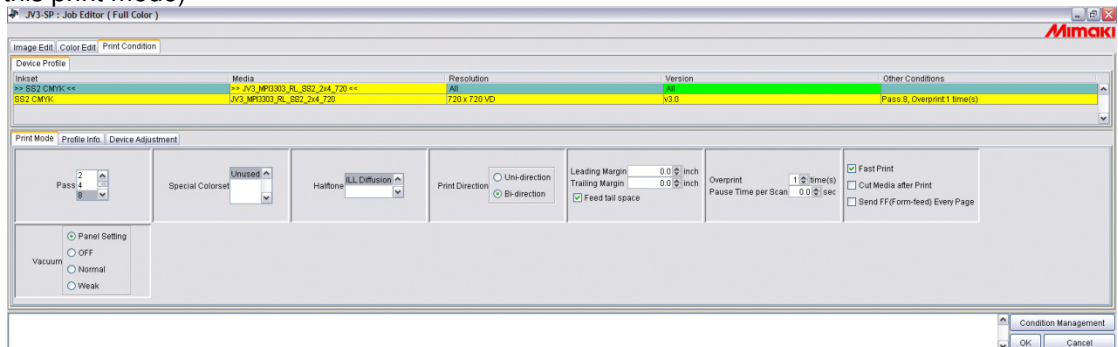
4.0 Applying

- To apply the profile, open a job, **right click** on it in the Job List, and choose **Edit**.



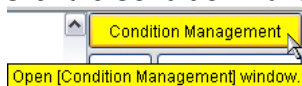
- Select the **Print Condition** tab. Ensure the **Version** column is set to **"All"** or **"v3.0"**.

Under the **Media** column, select the top listing, and choose the name of the profile that was just installed. A list of available print modes will appear below. **Select the mode** of the desired profile. (There may only be one choice available, but still make sure to select this print mode)



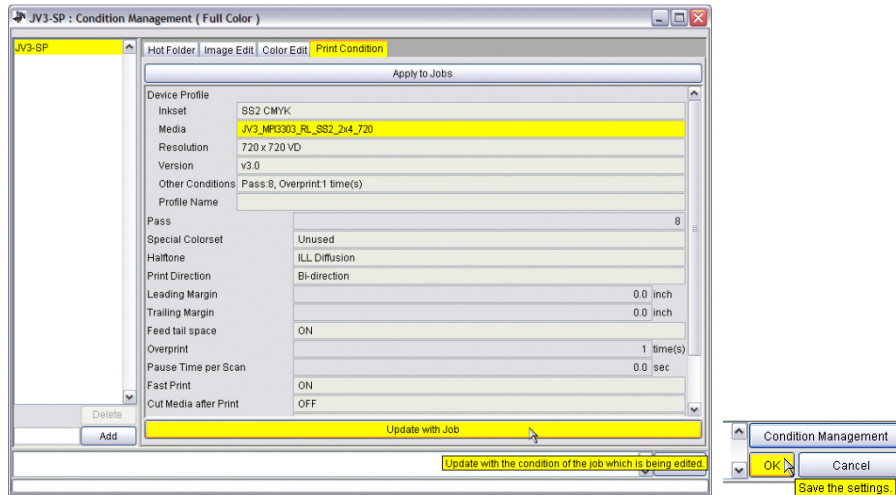
NOTE: The settings can be viewed in the bottom Print Mode tab change to those included and recommended for the profile.

- Click the **Condition Management** button in the bottom right of the Job Editor window.



Section 6 – Special Product Information Instructional Bulletin

Select printer > select the **Print Condition** tab > **Update With Job** (the settings change to those of the profile will be visible). **Close** the Condition Management window, next click **OK** in the Job Editor window to save the settings.

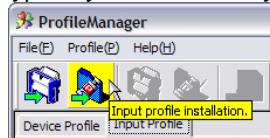


5.0 Additional Notes

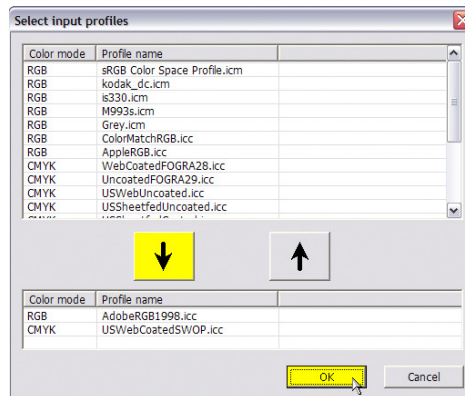
- **Input Profiles** – It is recommend setting up the ICC Input Profiles and ICC Rendering Intents to further color manage printing. These settings will have an effect on output, and may vary depending on need. For guidance on working with these settings, consult the Mimaki Raster Link help file, or contact Avery Dennison Technical Support for more information.

An example of how to access and change these settings is provided below.

1. Open **Mimaki Profile Manager**, and choose the second icon: **Input Profile Installation**. Browse to your operating system's profile folder (ex: for Windows computers, this is typically Windows > System32 > spool > drivers > color).



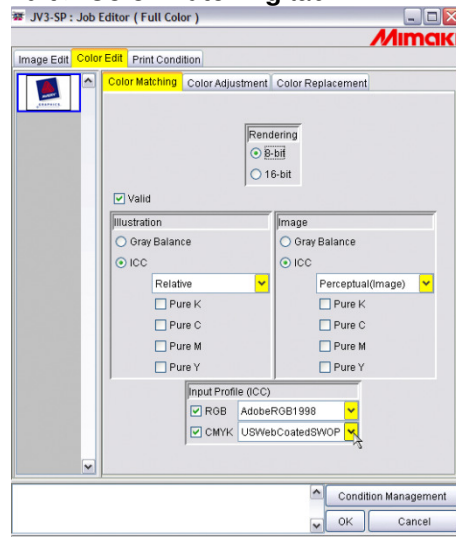
2. Select the ICC profiles that to be installed based on what is typically use for source files (sRGB, AdobeRGB, etc.), and click the **down** arrow so they appear in the bottom of the screen. Click **OK**.



Section 6 – Special Product Information Instructional Bulletin

NOTE: If some of the common ICC input profiles available are not found on the computer being used, many are available as free downloads from Adobe.com and color.org.

3. Once installed, these can be chosen when editing a job in **Job Editor**, under the **Color Edit > Color Matching** tab.



- **Feed Adjustment and Alignment Settings** - The media profiles do not contain feed adjustment settings. It is recommended to set this manually on the front panel of the printer when loading a new roll of media and additionally as needed. Performing the printer's Bi-Directional alignments is also recommended. Please refer to the printer's manual for details on making these adjustments.

Correct feed adjustment will help minimize or eliminate associated horizontal banding, and correct bi-directional alignment will improve dot placement for a crisper, less "grainy" look.

- **Default Profile Settings** - The media profiles have been provided with default settings that have been found optimal for printing with Avery Dennison media. It is generally recommended that the pre-determined print speed, ink limit information, etc., not be changed as doing so may introduce ink drying, color or other printing issues. To address the unique characteristics of a specific printer and printing environment, heater settings may be adjusted incrementally as necessary, and re-linearization is recommended if possible.
- The information contained herein is believed to be reliable but Avery Dennison makes no representations concerning the accuracy or correctness of the data. This product, like any other should be tested by the customer/user thoroughly under end user conditions to ensure the product meets the particular requirements. Independent results may vary.

Avery Dennison® and the logo are registered trademarks of Avery Dennison Corp.
Revisions have been italicized.

Mimaki Raster Link Pro II® is a registered trademark of Mimaki Engineering Co., LTD.

Other third party trademarks and trade names may be used herein and are the property of their respective owners.

©2011 Avery Dennison Corporation. All Rights Reserved.

Section 6 – Special Product Information Instructional Bulletin

Page 4 of 4



Graphics
Solutions

www.graphics.averydennison.com
Customer Service: 800-282-8379